

The Hydraulic CONNECTION

An Informative Industry Newsletter Published By:

PRE-MACHINED CHROME ROD PROGRAM

NOW AVAILABLE



Hercules Sealing Products is pleased to introduce a new Pre-Machined Chrome Rod Program to assist industrial and heavy equipment repair facilities with their cylinder repair needs. These pre-machined rods offer one end machined to fit standard Hercules pistons. The other end is blank for custom modification by the customer. To the right are a list of features and below are product selections. A quick reference chart for effective strokes of machined chrome rods and selection chart for piston, heads and seal kits to accommodate machined chrome rods can be found in the 2010 Kit and Cylinder catalogs, or on-line at www.HerculesUS.com. All products for the pre-machined Chrome Rod program can also be ordered directly through the Hercules website or by calling your regional sales staff at **1-800-777-5617**.

FEATURES:

- Steel Bar: Cold drawn, stress-relieved carbon steel bar per ASTM A311 Class B – 100,000 psi minimum yield strength. Shaft diameter is turned, ground, polished, induction hardened and chrome plated.
- Surface Hardness: Induction hardened to Rc 50 minimum Case Depth: 0.050" minimum per ASTM J423
- Plate Thickness: 0.001" minimum hard chrome-plated
- Hardness of Chrome Plate: Rc 68-72
- Surface Finish: 12 RMS maximum
- Packaging: Individually cardboard tube wrapped, inside hard plastic tubing
- Salt Spray Test: 48 hours minimum per ASTM B117
- Machined on one end to accommodate standard Hercules pistons. Piston styles: IT, ITW, TH, and TM.
- One end square cut to be modified, per application, by customer.

HERCULES[®] SEALING PRODUCTS

APRIL SPECIAL Metric O-Ring Kit

\$13.75 Net
(\$47.90 Retail Value)



The Metric O Kit-J-A contains a total of 389 O-rings in 30 different sizes. Offer available 4/1/10 - 4/30/10 While Supplies Last When Ordering Online Use Part # METRIC O KIT-J-A-PROMO

MAY SPECIAL Standard O-Ring Kit

\$9.50 Net
(\$31.97 Retail Value)



This kit contains a total of 382 O-Rings in 30 different sizes, providing an extremely low cost per size value. Offer available 5/3/10 - 5/31/10 While Supplies Last When Ordering Online Use Part #568 KIT-A PROMO

Maxi Pick Set

Was List Price
\$215.86
Now List Price
\$132.36



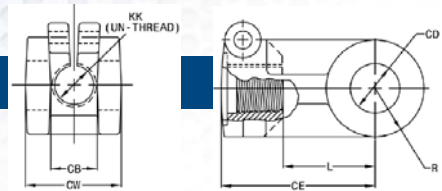
Packaged in a plastic pouch, these highly visible picks feature screwdriver-type colored handles. Set includes awl, hook tip, 45° bent tip tool, and 90° bent tip tool.

Order on-line now at www.HerculesUS.com

Rod Dia	Stub Dia	Part # 12" Nominal Stroke* (24" OAL)	List \$	Part # 24" Nominal Stroke* (36" OAL)	List \$	Part # 36" Nominal Stroke* (48" OAL)	List \$	Part # 48" Nominal Stroke* (60" OAL)	List \$	Part # 60" Nominal Stroke* (72" OAL)	List \$
0.750	0.625	CR1001-0.75X24-0.62	55.20	CR1001-0.75X36-0.62	80.53	CR1001-0.75X48-0.62	105.82	N/A	N/A	N/A	N/A
1.000	0.750	CR1001-1.00X24-0.75	68.18	CR1001-1.00X36-0.75	98.93	CR1001-1.00X48-0.75	129.69	CR1001-1.00X60-0.75	160.49	N/A	N/A
1.125	0.750	CR1001-1.12X24-0.75	74.58	CR1001-1.12X36-0.75	108.67	CR1001-1.12X48-0.75	144.82	CR1001-1.12X60-0.75	178.67	CR1001-1.12X72-0.75	212.76
1.250	0.750	CR1001-1.25X24-0.75	81.96	CR1001-1.25X36-0.75	119.78	CR1001-1.25X48-0.75	157.64	CR1001-1.25X60-0.75	195.56	CR1001-1.25X72-0.75	233.56
1.500	0.750	CR1001-1.50X24-0.75	107.69	CR1001-1.50X36-0.75	157.64	CR1001-1.50X48-0.75	209.11	CR1001-1.50X60-0.75	259.11	CR1001-1.50X72-0.75	309.24
1.500	1.000	CR1001-1.50X24-1.00	107.69	CR1001-1.50X36-1.00	157.64	CR1001-1.50X48-1.00	209.11	CR1001-1.50X60-1.00	259.11	CR1001-1.50X72-1.00	309.24
1.750	1.000	CR1001-1.75X24-1.00	142.76	CR1001-1.75X36-1.00	209.33	CR1001-1.75X48-1.00	277.24	CR1001-1.75X60-1.00	342.31	CR1001-1.75X72-1.00	408.80
2.000	1.000	CR1001-2.00X24-1.00	147.69	CR1001-2.00X36-1.00	218.04	CR1001-2.00X48-1.00	287.16	CR1001-2.00X60-1.00	357.51	CR1001-2.00X72-1.00	426.67
2.000	1.250	CR1001-2.00X24-1.25	147.69	CR1001-2.00X36-1.25	218.04	CR1001-2.00X48-1.25	287.16	CR1001-2.00X60-1.25	357.51	CR1001-2.00X72-1.25	426.67
2.500	1.250	CR1001-2.50X24-1.25	209.20	CR1001-2.50X36-1.25	308.80	CR1001-2.50X48-1.25	408.36	CR1001-2.50X60-1.25	507.82	CR1001-2.50X72-1.25	606.27
3.000	1.250	CR1001-3.00X24-1.25	283.87	CR1001-3.00X36-1.25	419.29	CR1001-3.00X48-1.25	554.71	CR1001-3.00X60-1.25	690.13	CR1001-3.00X72-1.25	825.51

**ROD
CLEVISES**

MOBILE MOUNTS



Mobile Split Clevis

Material: Ductile Iron

PART NUMBER	CB	CD	CE	CW	KK	L	R	LIST PRICE
CM-RC10033	1.12	1.00	3.25	2.62	1-1/16"-12	2.12	1.00	\$ 40.42
CM-RC10034	1.12	1.00	3.25	2.62	1-1/8"-12	2.12	1.00	39.65
CM-RC10035	1.12	1.00	3.25	2.62	1-1/4"-12	2.12	1.00	41.98
CM-RC11312	1.25	1.25	3.25	2.75	1-1/4"-12	2.12	1.25	67.24
CM-RC11412	1.25	1.25	4.00	2.75	1-1/4"-12	2.75	1.25	15.61

Can be used on HTR cylinders or equivalent size cylinders.

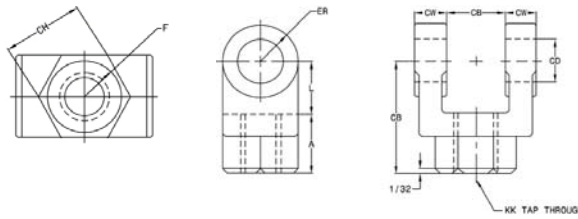
INDUSTRIAL MOUNTS



Rod Clevis

Material: 0500, 0750,
1000 Forging, 1375 & Up
Ductile Iron Casting

PART NUMBER	CB	CD	CE	CH	CW	F	L	A	KK	ER	LIST PRICE
CM-RC0500	0.765	1/2	1-1/2	1	1/2	1	3/4	3/4	7/16"-20	1/2	\$ 17.99
CM-RC0750	1.265	3/4	2-3/8	1-1/4	5/8	1-1/4	1-1/4	1-1/8	3/4"-16	3/4	38.29
CM-RC1000	1.515	1	3-1/8	1-1/2	3/4	1-1/2	1-1/2	1-5/8	1"-14	1	62.24
CM-RC1375	2.032	1-3/8	4-1/8	2	1	2	2-1/8	2	1-1/4"-12	1-3/8	125.82
CM-RC1750	2.531	1-3/4	4-1/2	2-3/8	1-1/4	2-3/8	2-1/4	2-1/4	1-1/2"-12	1-3/4	154.29
CM-RC2000	2.531	2	5-1/2	2-15/16	1-1/4	2-15/16	2-1/2	3	1-7/8"-12	2	253.48
CM-RC2500	3.032	2-1/2	6-1/2	3-1/2	1-1/2	3-1/2	3	3-1/2	2-1/4"-12	2-1/2	450.33
CM-RC3000	3.032	3	6-3/4	3-7/8	1-1/2	3-7/8	3-1/4	3-1/2	2-1/2"-12	2-3/4	677.79
CM-RC3500	4.032	3-1/2	8-1/2	5	2	5	4	4-1/2	3-1/4"-12	3-1/2	989.34
CM-RC4000	4.532	4	10	6-1/8	2-1/4	6-1/8	4-1/2	5-1/2	4"-12	4	1,727.40



Hercules carries a full line of commonly used cylinder component parts for industrial and mobile cylinders.

- Mobile Cylinder Heads
- Mobile Cylinder Caps
- Mobile Pistons
- Mobile Mounts
- Mobile Welded Mounts
- Machined Chrome Rods
- Industrial Welded Mounts
- Spherical Bearings
- Industrial Couplings and Nuts
- Split Tension Bushings, Plugs and Vents
- Displacement Cylinder Components
- Accessories

**Same Day
SEALS ON DEMAND**



**Orders Placed
By Noon
Ship Same Day
(Noon EST)
UPS Next Day Air
Limits on Quantity, Style
and Materials**

→ Manufacturing
Custom Seals Since 2005!

→ Custom Sizes For Over
125 Standard Profiles

Visit our website at
www.HerculesUS.com
To request a quote and
view a complete list of
custom seal materials,
profiles and sizes.

Customer Survey

Submit Your Survey And Be
Entered To Win \$100.00 Credit
Towards Your Next Order.
(3 Winners Will Be Picked)

Your opinion matters! Please take a moment to fill out and fax back the following customer survey to **727-797-8849** or **1-800-759-6391**. If you'd rather take the survey on-line, please visit our website at

www.HerculesUS.com. Click the "Customer Survey" button on our homepage. We look forward to making improvements to assist you and your company with making repairs fast and convenient.

Value Added Services

- Do you have a need to have products bulk packaged? Yes No
- Do you have a need for special packaging? Yes No
- Do you have a need to have your products placed in Hercules boxes? Yes No
- Do you have a need to have your order consolidated prior to shipping? Yes No
- Do you have a need for job order packaging? Yes No

Customer Service (1 Excellent, 2 Very Good, 3 Good, 4 Fair, 5 Needs Improvement) - circle one

- Rate the promptness in which your phone call is answered 1 2 3 4 5
- Rate the attitude and professionalism of your regional sales staff 1 2 3 4 5
- Rate the manner in which regional sales teams assess and resolve your order needs 1 2 3 4 5
- Rate the response time for your quotations 1 2 3 4 5
- Rate Hercules' ability to ship your order in a timely manner 1 2 3 4 5
- Overall, how is the quality of the order fulfillment provided to you 1 2 3 4 5

Product Performance and Quality (1 Excellent, 2 Very Good, 3 Good, 4 Fair, 5 Needs Improvement) - circle one

- Does Hercules' product offering meet your business' needs? Yes No
- Suggestions for additional product lines? _____
- Rate our Seals On Demand, custom seal program 1 2 3 4 5
- Rate the quality of Hercules' seals 1 2 3 4 5
- Rate the quality of Hercules' repair kits 1 2 3 4 5
- Rate the Hercules' product packaging 1 2 3 4 5
- Rate the competitive pricing of Hercules' products 1 2 3 4 5
- Overall, has the quality of Hercules' products met your expectations? Yes No

Website and Company Literature (1 Excellent, 2 Very Good, 3 Good, 4 Fair, 5 Needs Improvement)

- The Hercules' on-line ordering experience 1 2 3 4 5
 - The Hercules' website registration process 1 2 3 4 5
 - Website speed 1 2 3 4 5
 - Hercules catalogs 1 2 3 4 5
 - Hercules customer newsletters 1 2 3 4 5
 - Which is your preferred website browser? MS Internet Explorer, Safari, Firefox, Chrome, Other _____
 - Do you have a need for web ordering Freight Collect or Consignee (third party) billing? Yes No
 - Do you have a need for web ordering blind packaged drop shipments? Yes No
 - Do you ever place multiple orders the same day on the website and have the need to consolidate shipping? Yes No
 - Do you have a need to use a phone application to place web orders through your Smart Phone? Yes No
 - Please suggest any features that are not currently offered on the Hercules website. _____
-
-
-



1016 N. Belcher Road
Clearwater, Florida 33765
www.HerculesUS.com

Hercules Provides More Than Just Parts...

Hercules Also Supplies:

- Technical Support
- Training Seminars
- 100% Guaranteed Satisfaction
 - JIT Inventory
 - Highest Quality Parts
- Mastercard / Visa / AMEX
- Same Day Credit Approval
- www.HerculesUS.com
- Toll Free Phone & Fax Network
- Seals, Kits, Components & Gaskets
- Extensive Annual Product Catalogs
 - Low Shipping Costs
 - Next Day Delivery
 - Special Packaging



PRSR STD
U.S. POSTAGE
PAID
TAMPA, FL
PERMIT NO. 3279

ADDRESS SERVICE REQUESTED

Installation of PTFE Piston Seals

Installing PTFE piston seals is not always an easy task. The use of installation tools is recommended but often not convenient when working with a wide variety of sizes and applications. Finger installations are practical with rings of smaller cross-sections. Using fingers or a rounded plastic stick, knead the ring over the piston into the groove. With rings of larger cross-sections it may be necessary to heat the ring. Warming the ring in water or oil at 130° F or 140° F for about 5 minutes will soften the material for easier installation. Always avoid inconsistent stretching or overstretching of the PTFE seal.

To prevent the PTFE ring from snapping into the wrong groove, cover wear ring grooves with plastic tape.

After seal installation, assembly of the cylinder may be difficult if the piston seal is loose on the piston or the cylinder has an inadequate leading edge chamfer. In such cases, compress the piston seal with belting or a suitable hose clamp. If the piston seal must pass threads or any other sharp edges during the cylinder assembly, cover the edges with plastic tape or wrap.

For a complete list of PTFE Piston Seals visit the “Company Literature” section of our website (top menu). The 2010 Seal Catalog can be downloaded in PDF format. Page 105-106 features the Style PS1400 Glass Filled PTFE piston seals selection.

